

Making POP3 & SMTP Server work with windows server 2008

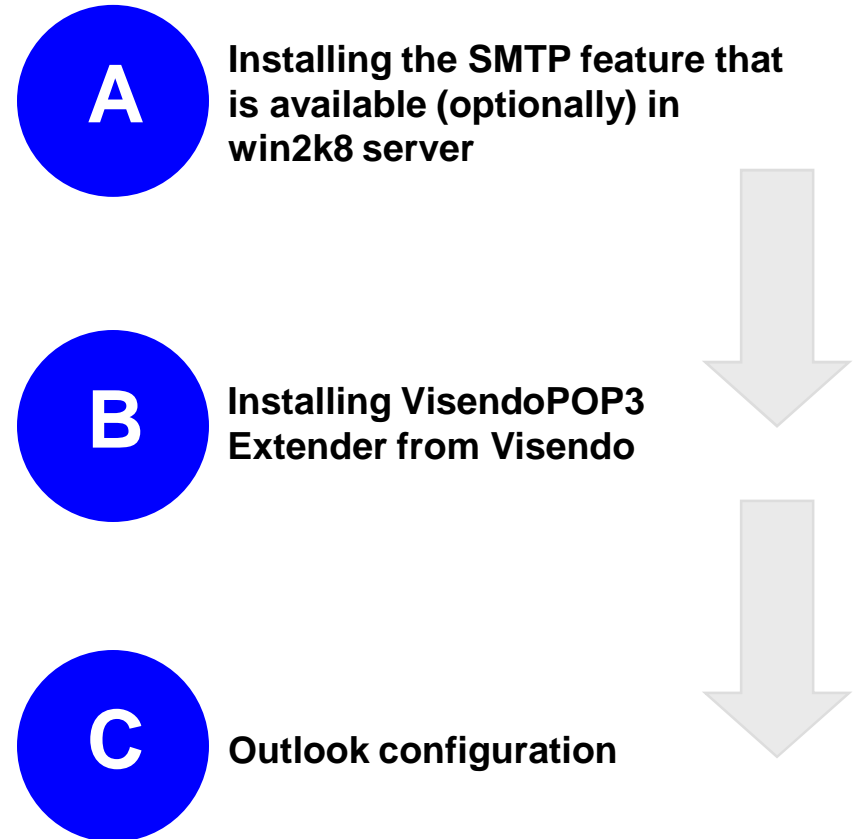
*“Not so long ago we switched our SharePoint development environments from windows server 2003 to **Windows Server 2008**. Everything was working smoothly until we needed to start sending and receiving e-mail.*

*Shock! No more POP3 available OOTB in 2008. Microsoft has stopped shipping this product with the 2008 version, so the POP service had only been around for only one version of **Windows Server**. My first thought was that it was not necessary for server environments as there were better options available for processing mail etc. Now a POP3 server is something that I needed to be able to keep my VPC lightweight (no Exchange needed), and still be able to test mail sending (like alerts) locally.*

*Luckily, **Visendo Team** - www.visendo.com has made an extension for Windows Server 2008 that makes this possible.”*

[Hannes Preishuber, CEO at ppedv A.G](#)

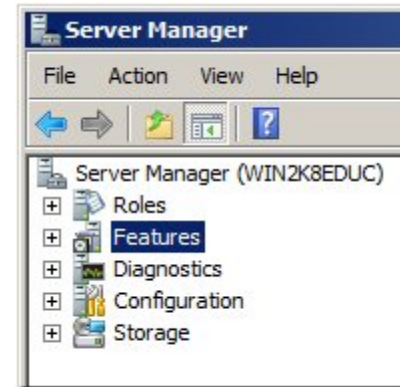
Installation and configuration of SMTP Extender



Installing the SMTP feature that is available (optionally) in win2k8 server

1

Open up your “Server Manager” and go to “Features”



2

Click on “Add Features”



3

Select “SMTP Feature” (Already installed in my next screenshot)

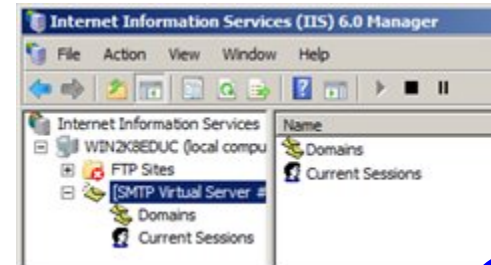


4

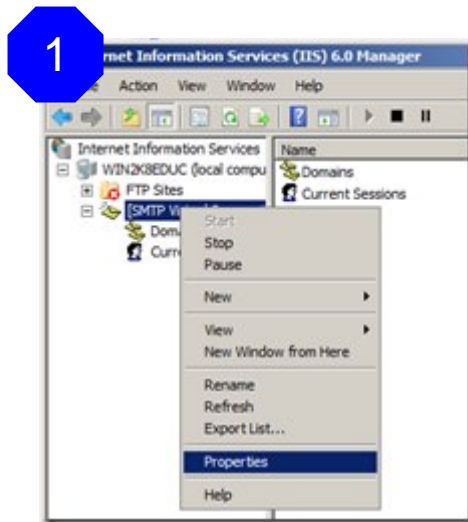
Click install and follow the steps (this might take a while)

5

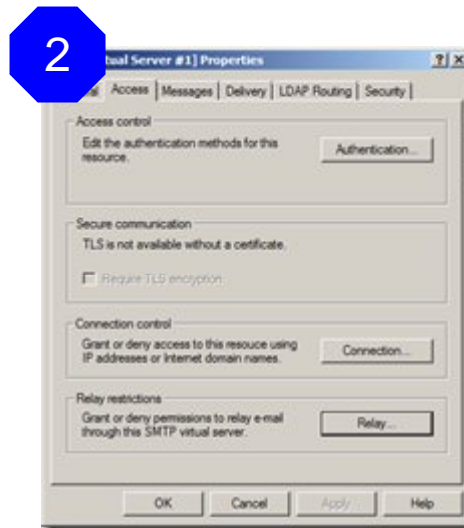
To manage your SMTP Server you can go to IIS 6.0
Make sure it is started



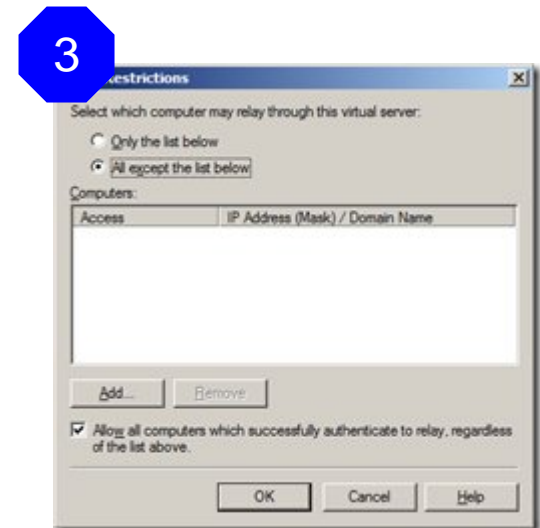
If you encounter problems (e.g.- “Unable to relay”) you can fix this by changing to IIS6.0



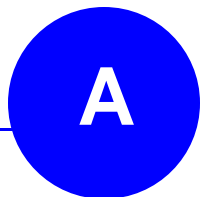
Go to the properties of your SMTP Virtual Server



Go to Access > Relay...



Select “All except the list below”



- 1** Install the installer found here: <http://weblogs.asp.net/hpreishuber/archive/2008/04/30/visendo-smtp-pop3-extender-for-windows-2008-server.aspx>
- note: next steps are copied from the blog above, I'll just add some comments between the lines
- 2** Move "visendosmtpextender_sample.config" from "C:\Program Files\ppedv\visendosmtpextender" to "C:\Documents and Settings\All Users\Application Data\ppedv\visendosmtpextender"
- To get to this path just copy it and paste it in Start > Run. Otherwise if you go looking for c:\documents and settings (or just type this in) you might get an Access Denied error
- 3** Rename to "visendosmtpextender_sample.config" to "visendosmtpextender.config"
- 4** Edit "visendosmtpextender.config"

To give you an idea, my configuration looks like this:

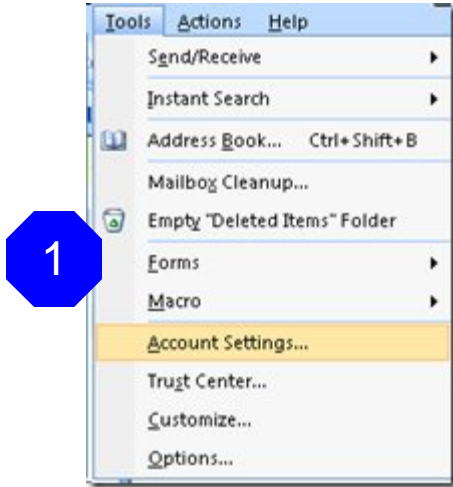
```
<VISENDO>
<POP3>
  <Outbound UseOutboundPop3="true" StoreFolder="C:\inetpub\mailroot\drop" ServerPort="110" ServerIP="127.0.0.1"/>
</POP3>
<accounts>
  <mailbox datadir="C:\inetpub\mailroot\drop\administrator_moss_localhost" destination="administrator@moss.localhost" password="password"/>
</accounts>
</VISENDO>
```

- 5** Start service "Visendo SMTP Extender Service 2008"

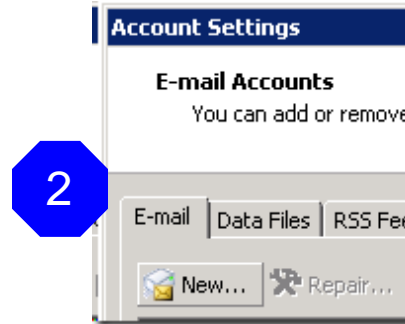


Visendo SMTP Extender Service 2008 | Visendo SM... | Started | Automatic | Local System

- 1 please note:** when StoreFolder="C:\inetpub\mailroot\drop", and datadir is the subfolder "C:\inetpub\mailroot\drop\accountname1", destination must be "accountname1", without any "@".
Further, when there should be an "@" or "." in the accountname, replace it with "_" in the foldername. ex:
datadir="C:\inetpub\mailroot\drop\account1_domain_com"
destination="account1 @domain.com"
- 2** if there are problems starting **the service**, take a look at the log files to find out the reason (C:\Documents and Settings\All Users\Application Data\ppedv\visendosmtpextender\Logs), or send them to support@ppedv.de



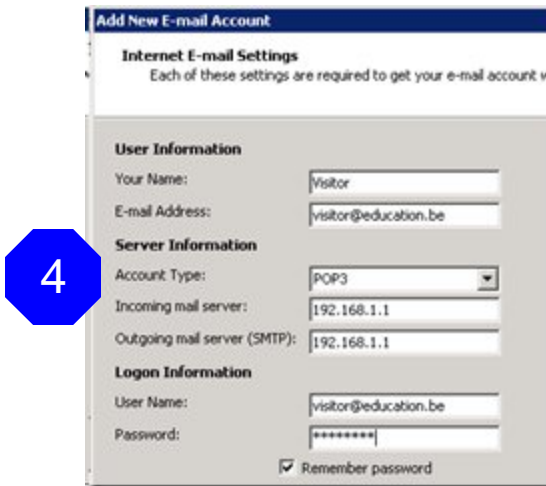
Go to Tools > Account Settings



Create a new account

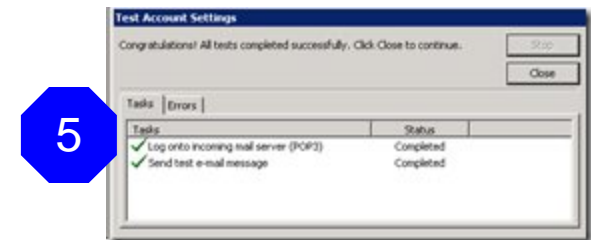


Select manually configure server settings or additional server types > Next > Internet E-mail > Next

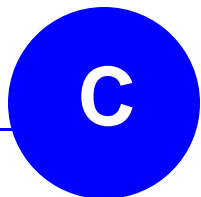


Fill in the following settings

*Note: I have set my IP to 192.168.1.1 because that's the way I set it in my VPC
1. Test your settings by clicking "Test Settings"*

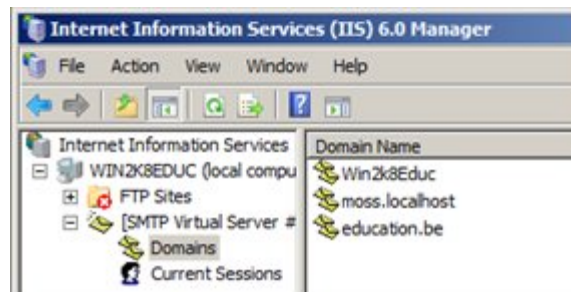


Test your settings by clicking "Test Settings"



Your mails are staying put in c:/inetpub/mailroot/queue

Solution: Define aliases for your hostnames in IIS6.0 SMTP Virtual Server like this:



For further information, please visit us

- ➔ Website: <http://www.visendo.com>, [Product downloads](#)
- ➔ Blog: <http://www.blog.visendo.com>
- ➔ [Twitter](#) , [Facebook](#)
- ➔ Did you find this presentation useful? [Give us feedback NOW!](#)